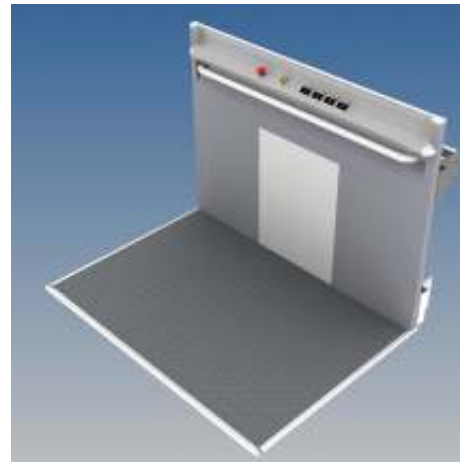




THE NEW PLATFORM LIFT A4



KALEA 
LIFTS

NEXT LEVEL

Certification Kalea A4

EC Type Certificate

- Kalea platform lift A4 is EC type tested and certified by the European Notified body INSPECTA to be in total compliance with all of the relevant essential health and safety requirements of the Machinery Directive 98/37/EC
- The Kalea Lifts platform lift A4 is already in full compliance with the safety requirements of the new European standard EN 81-41.



NEXT LEVEL

The new Kalea A4

Easy to operate, smart design

- *All functions are intuitive and easy to use.*

Upgradeable to suite specific needs

- *A lot of options are available to make it fit to any specific needs. RAL colors to make it blend in or stand out, glass shaft, school locking etc...*

4 side glazed shaft

- *All four sides can be glazed for a “see-through” look, making the lift blend in...*

Travel up to 13 meters

- *High lift capacity with up to six stops.*

Smartcard

- *Personalized access system in public areas*



KALEA 
LIFTS

NEXT LEVEL

The new Kalea A4

Easy to install without preparations

- *The A4 comes ready "out of the box" and is ready to be installed. Perfect for old buildings that require a lift.*

Simple installation – all components can be carried by hand

- *The platform can be splitted in two. Parts are made to be easy carry.*

Micro computer based control system

- *Making service, installation and performance easier to monitor giving a better total economy.*

Easy dismantling of shield wall panels for maintenance

- *Shield walls can easily be removed making service accessibility easier.*

Built-in guide rail, hidden out in the corners

- *Guide rail in aluminium positioned out in the corners. No trapping hazard with grooves on the machine wall*



KALEA 
LIFTS

NEXT LEVEL

Standard features Kalea A4

The control panel/drive system safety

- Emergency stop button
- Alarm bell button
- Overload device
- Hold to run landing buttons
- LED-light on platform
- Extra long hand rail
- Built in CANSee
- SumAlarm

Safety nut:

- Installed 47 mm below the drive nut
- Electrically supervised
- Mechanical stop if drive nut breaks
- 2 mm wear and tear tolerance, indication built in
- Screw is self-sustained



KALEA 
LIFTS

NEXT LEVEL

Standard features Kalea A4

Sum alarm

- Inbuilt alarm function in electrical cabinet (potential free contact)
- Can be connected to different receivers as central alarm units, receptions, light etc...
- The alarm is automatically reset when the fault is remedied.

It gives alarm at 9 different occasions:

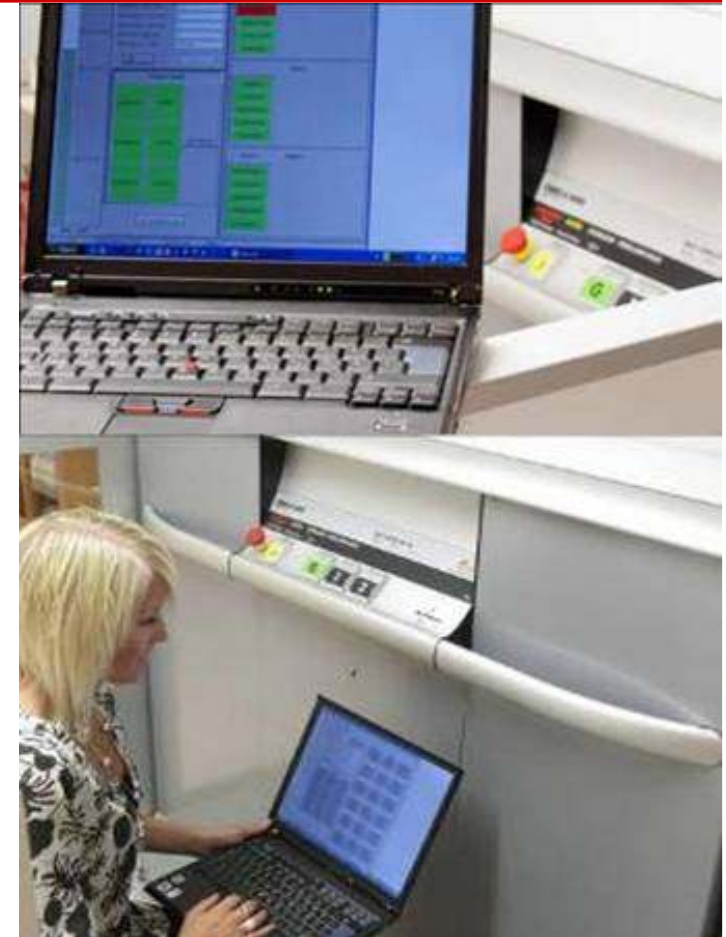
1. The complete system is checked when starting up
 - Always when electricity is switched on
2. All door nodes are checked during travel
3. If the incoming phases are in wrong order
 - On a three-phase lift – at first installation
4. If the lift does not run
 - Pulse counting error
5. Bad or no contact at a landing contact
6. E-prom error (master node memory)
7. Error in the program (E-prom)
8. If a door is open more than 10 minutes
9. If a lift stops between levels (can be adjusted between 4-300 sek)



Standard features Kalea A4

Supervise your platform lift with CANsee

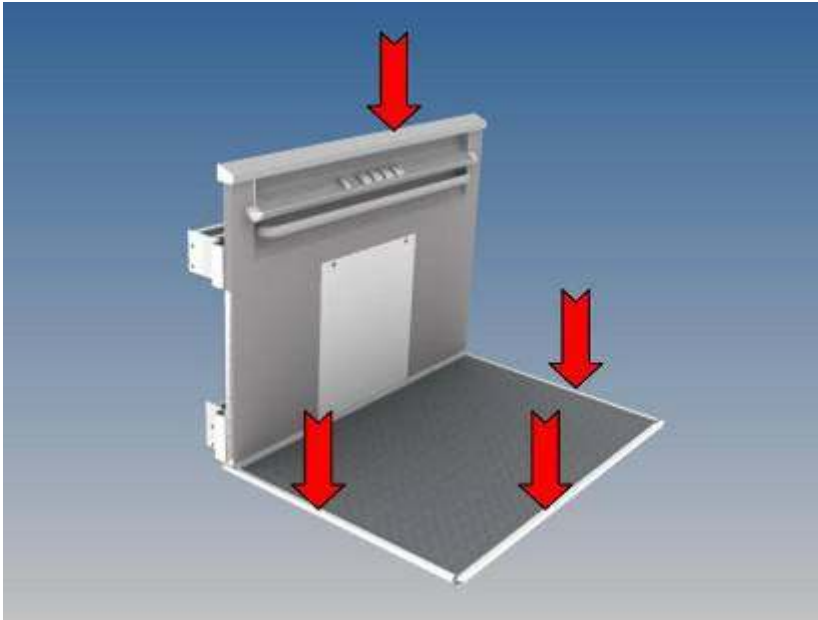
- Simply connect the computer to the master node on the platform and start the survey.
- Get a view of number of starts, alarm periods, the latest errors etc.
- Detect the error and get the solution. CANsee directs you step by step to the measures to be taken to put the platform lift into operation.
- Adjust parameters such as for the school locking system, alarm periods during downtimes etc.
- The supervisory programme is downloaded from Kalea and installed on a laptop.
- Connect with special cable included in service bag



KALEA 
LIFTS

NEXT LEVEL

Standard features Kalea A4



Sensitivity safety edges

- Sensitive safety edges all around the platform and all along the upper part of the vertical control panel.
- Distance between platform and surrounding shaft walls is a maximum of <10 – 15 mm.

Standard features Kalea A4

Hold to run push buttons/ travel speed 0,15 m/s

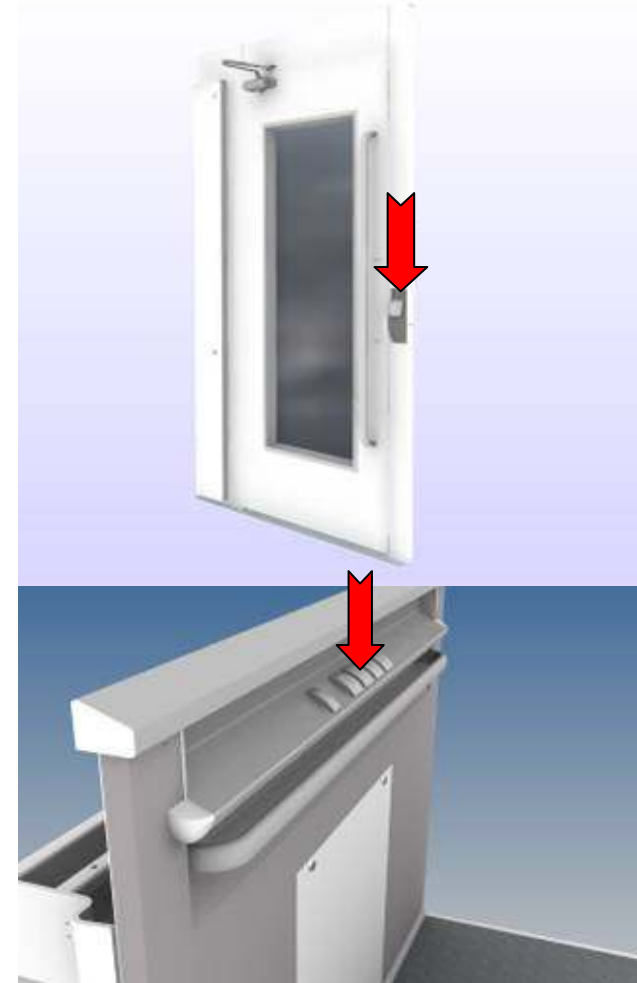
Continuous pressure “hold to run” buttons

- Platform lift stop immediately, if a hold to run button is released.

Inside landing buttons have priority to the outside hold to call buttons.

Speed of Kalea A4 is 0,15 m/sec,

- Stopping distance of a moving platform maximum of 10-15 mm.



KALEA 
LIFTS

NEXT LEVEL

Door models

Kalea standard A42

- Extra glazed steel door
- Long handle on door and panel
- Hidden door closer
- Subtle design
- Kalea profiled



KALEA 
LIFTS

NEXT LEVEL

Door models

NEW

Aluminium

- Natural anodized aluminium
- Better look, nicer design
- Lighter weight
- Suitable for outdoor installations
- Two versions;
 - AL4 with a single large panoramic window
 - AL3 with two windows
- Long integrated handle from top to bottom
- Standard door finish is aluminium. Can be powder coat painted in any RAL colour as option.

Technical data		
	AL3	AL4
Clear door width	900 mm	900 mm
Clear door height	2000 mm	2000 mm
Window size	729x1591 mm	L729x520 mm U729x921 mm



KALEA 
LIFTS

NEXT LEVEL

Door models

NEW

EI60G – panoramic fire rated swing door

- The first lift door with an extra large glass vision panel which is both gas- and fire resistant for 60 minutes.
- Creates new possibilities of attractive solutions in fire rated environments.
- EI60G with panoramic window complies with the safety regulations in the Lift Directive 95/16EC and the European standard EN 81-58.
- Single blade swing door with approved classification on frame and doorplate.
- For installation in self supporting lift shafts or as part of a fire rated wall in building.
- Delivered with inside hidden hinges and door closer and there are no gaps or screws on the side panels.
- Hidden door closer

Technical data

Clear door width	900 mm
Clear door height	2000 mm
Window size	700 x 1563 mm



KALEA 
LIFTS

NEXT LEVEL

Door models

Kalea fire rated door EI60

- Single blade swing door with approved classification on frame and doorplate.
- For installation in self supporting lift shafts or as part of a fire rated wall in building.
- Delivered with inside hidden hinges and door closer and there are no gaps or screws on the side panels.
- Small window
- Hidden door closer
- Approved according to EN81-58



Door models

Half height door

- With or without windows
- Height 1100 mm
- Subtle design
- Kalea profiled



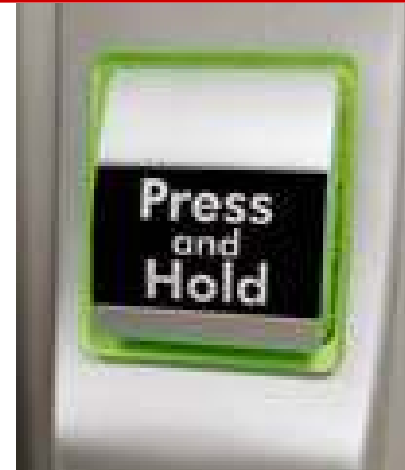
KALEA 
LIFTS

NEXT LEVEL

Standard features doors

Call buttons with a LED light

- Green when at your landing
- Red when lift is occupied



Options to doors

Options

- Automatic door opener
- Any RAL color
- Ramp (included when pit is 0 mm)

NEW



KALEA 
LIFTS

NEXT LEVEL

Options

Glazed on all four sides

- See-through-look
- Cover over nut included
- Machine side D double glazed
- Always laminated glass 4,00-0,76-4,00 mm

Oil splash cover

- Covering drive nut

NEW



KALEA 
LIFTS

NEXT LEVEL

Options

Telephone

- Standard wall phone (Separate or through emergency button)
- Intercome (Aiphone)
- Safe line MX
- Safe line MX GSM



Options

School lock

- The school lock system will lock all the doors on the lift
- The delay time after the door is closed until it is locked, is adjustable in steps of 4 sec, between 4-300 sec
- The school lock system is very suitable in schools, homes for elderly etc



Options

Kalea Key Card

- Branded Kalea
- Kalea Key Card is used instead of a key.
- Key Card can be installed on the panel and / or the door fronts.
- Each Key Card is unique and will be programmed to match the access allowed to the specific user.
- It is possible to run the lift without the Key Card, but only the doors in general use will open.
- Use it in offices, shops, block of flats and all occasions where there is a need of a limited access for the public.



Options

NEW

Automatic shaft light

- The light can be programmed to switch off after 4-300 seconds (the time can be programmed via the CANSee system).
- Will pull the solenoid to lock the door and at the same time switch off the light.
- Will be unlocked simply by pushing the call button on the door.
- The light is then at the same time activated.
- This solution can be ordered by specifying "automatic shaft-light" in the text field in E-order.
- Installing automatic shaft light will reduce the power consumption and the impact on the environment.



KALEA 
LIFTS

NEXT LEVEL

Options

NEW

LED-Light for shaft ceiling

- A new option for the inner shaft ceiling incorporating three LED spotlights.
- Using LED lights will reduce power consumption and the impact on our environment.



KALEA 
LIFTS

NEXT LEVEL

Options

NEW

Remote call button

- The call buttons (same as on the door) can in addition to the ones on the door, be placed remotely up to 5000 mm from the lift.
- This option can be ordered by specifying (Remote call button) in the text field in e-order.



KALEA 
LIFTS

NEXT LEVEL

Options

Fire alarm drive

- Connected to external fire alarm
- Lowered to chosen floor



NEXT LEVEL

Options

Elbow call button

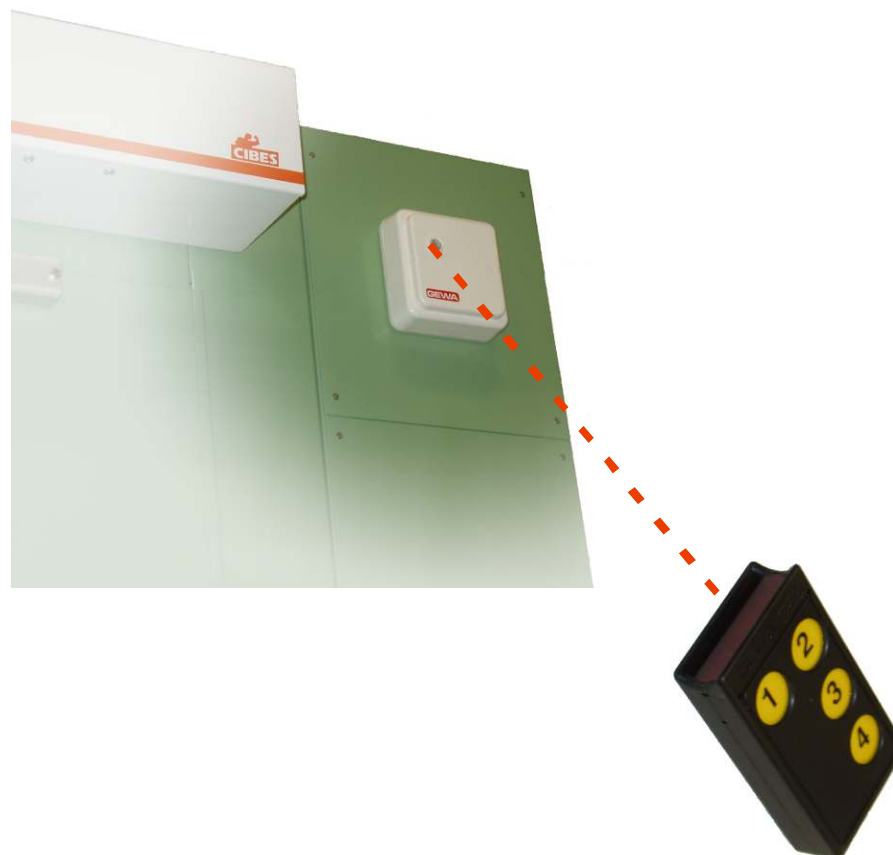
- An elbow call button can in addition to the ones on the door, be placed remotely up to 5000 mm from the lift.
- This option can be ordered by specifying (Remote elbow call button) in the text field in e-order.



Options

IR Control

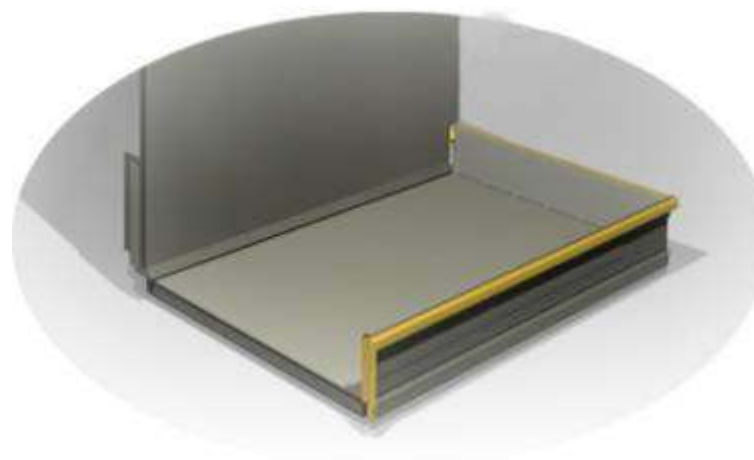
- IR control is a wireless remote control
- The lift is controlled by a handheld transmitter and receivers placed on the doors and on the platform
- IR control is mostly used when the user have problem to use the normal push buttons



Options

Raised edge on platform

- The raised edge is 100 mm high
- The raised edge can be ordered on side A, B and C, but not where there are doors installed
- It will protect the shaft walls when carts and walking frames are frequently used
- Safety edge in yellow on edge



Options

NEW

Door information display

- The information display is showing the position of the platform, like a level indicator.
- Possible to store about 60 different symbols in the inbuilt memory of the INFO-LED.
- Following levels will be displayed: -2, -1, 0, 1, 2, 3, 4, 5, 6, E, G, B, U, KG, LG, UG, EG, OG, DG.
- When the call button is pressed the display shows the direction: Up or Down.
- We will be able to show other kinds of information in the future, such as overload, service etc.
- Latest OLED technology.
- Designed to match the call button design.



KALEA 
LIFTS

NEXT LEVEL

Options

Arrival bell

- The arrival signal is a small loudspeaker installed in the door
- It will give an audible signal when the lift arrives to a landing
- Suitable when the lift is used by people with bad or no eyesight



KALEA 
LIFTS

NEXT LEVEL

Options

Voice annunciator

- Make it easier for people with bad sight
- 60 sec message time as standard



KALEA 
LIFTS

NEXT LEVEL

Options

Battery lowering device

- The battery lowering device consists of:
 - Electric 12V motor
 - Worm gear
 - 12V Battery
 - Special bracket
- Control buttons inside the electric compartment
- The battery is continuously charged by the alarm card
- It is possible to assemble on already installed lifts
- Will not take any major changes in the construction



Options

Outdoor roof & Canope

- Kalea A4 is suitable for outdoor installations
- A new designed roof will protect the shaft and machine room
- Ventilation of the machine room prevent condensation inside the shaft
- Exposed parts are galvanised
- Electronic parts, as PCB:s are varnished to suit the environment

Outdoor roof

- Four standard solutions
- Fits 1000 and 1100 platform

Canope

- Covers the entrance



Options

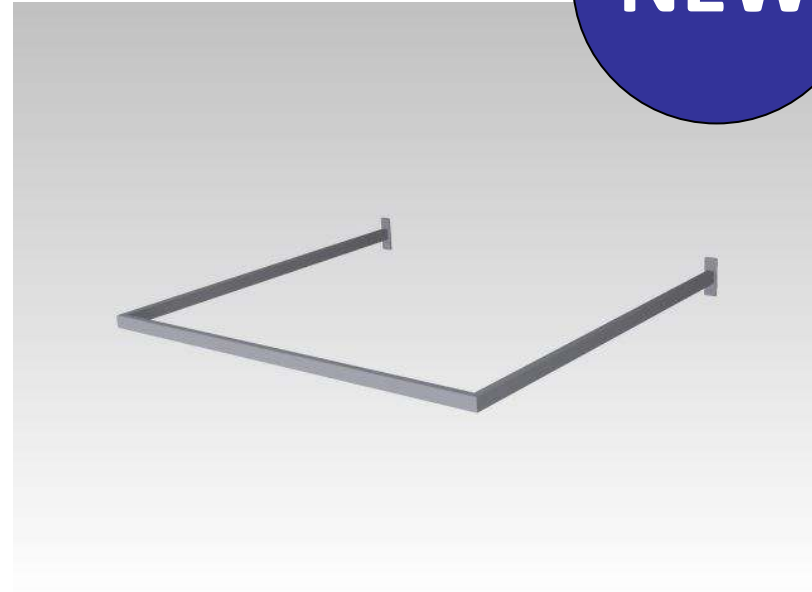
NEW

U-bracket

- Installed on outdoor lift
- Higher raise then 3500 mm
- Wind load calculations with U-bracket

Telescopic arm

- Installed instead of U-bracket



KALEA 
LIFTS

NEXT LEVEL

Options

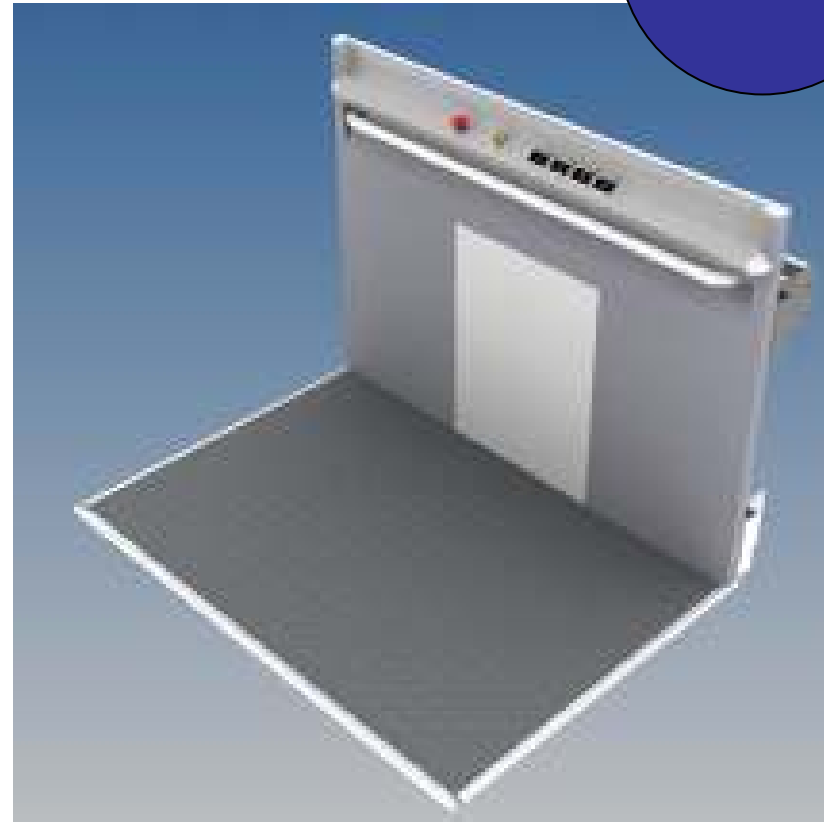
NEW

Floor panel

- Covers pit – glazed lifts
- Standard RAL 9016
- Available in any RAL color

Floor panel

- Under platform – glazed lifts
- Standard RAL 9016
- Available in any RAL color



KALEA 
LIFTS

NEXT LEVEL

Options

Semi standard



NEXT LEVEL

News in a near future

- **New internal power door opener**
 - Discretely built into the door fronts (optional)
 - Can be retrofitted into an already installed door front
 - If opened manually, the door opener will stay inactivated.
- **High raised back**
 - 2nd half year 2009



Schools



KALEA 
LIFTS

NEXT LEVEL

Churches



KALEA 
LIFTS

NEXT LEVEL

Office buildings



KALEA 
LIFTS

NEXT LEVEL

Commercial buildings



KALEA 
LIFTS

NEXT LEVEL

External installations



KALEA 
LIFTS

NEXT LEVEL

Technical data Kalea A4

- Drive:** Screw and nut
- Rated load:** 400 kg
- Rated speed:** 9m/min 0,15m/s
- Lifting height:** Up to 13 m (max 6 landings)
- Platform dimensions standard:** 1500 x1000 / 1500x1100 (length x width mm)
- Footprint dimensions standard:** 1630 x1400 / 1630x1500 (length x width mm)
- Platform dimensions semi standard:** 800x1250/1000x1300/900x1500mm/1100x1400mm
- Footprint dimensions semi standard:** 1200x1350/1400x1400/1300x1600/1500x1500
- Shaft:** Self supporting prepainted steelpanels RAL 9016
- Door configuration:** Single entry, open through, adjacent (max 3 per landing)
- Doors:** Single hinged doors or gates RAL 9016, Standard glass door 2000 x 900 mm, EI60 fire and gas proof 2000 x 900 mm, Gate 1100 x 900
- Control system:** Micro computer based control system
- Power supply:** 400 V, 3 phase 50/60 Hz, 16 amp starting current
220-240 V 1-phase frequency converter
230-400 V 3-phase frequency converter
Soft start and stop as option
- Motor power:** 2,2 kW
- Fault alarm:** A potential free contact can be connected to alarm units
- Sound level on the platform:** 65-70dB
- Sound level from 4 metres:** 50-54dB



NEXT LEVEL