

ROLL ON

COMPACT



KALEA 
LIFTS

NEXT LEVEL

ROLL ON COMPACT -

THE NARROW DESIGN STAIRLIFT

The Roll On Compact MK III is a part of Kalea's new generation of inclined platform lifts for straight stairs, approved according to all the latest European standards and regulations. There are many good reasons for choosing a Roll On Compact:

DISCRETE & ELEGANT DESIGN

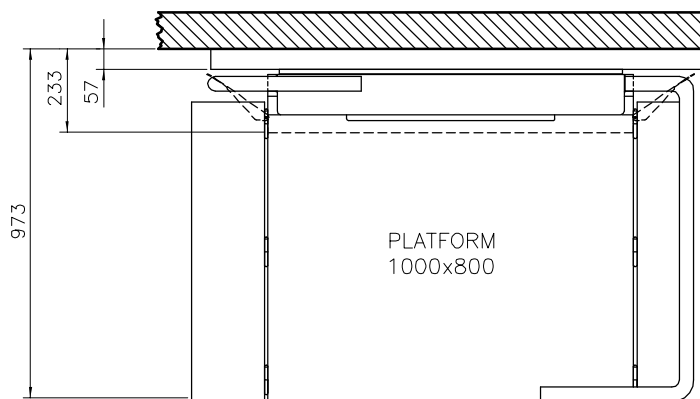
The Roll On Compact is a smart and versatile lift, whose soft, elegant lines and narrow design will allow it to blend in with most architectural environments. However, there is a lot more to the Roll on Compact design and concept than first meets the eye.

NARROW DESIGN

In parking mode, the platform of the Roll On Compact folds up, while the safety barriers fold down behind it. Not only does this make the lift extremely compact, it also leaves your staircase accessible and makes the lift vandal resistant. In fact, a parked Roll On Compact requires an incredibly small amount of space, only 237 mm, platform and rails included.

VERSATILE SOLUTION

The Roll On Compact can be fitted just as well on the left hand side as on the right hand side of the stairs. Thanks to a wide range of attachment solutions, the Roll On Compact does not even require a wall for installation.



ROLL ON COMPACT -

ROLL ON, RIDE & FOLD AWAY

HIGH PERFORMANCE & SMART FUNCTIONS

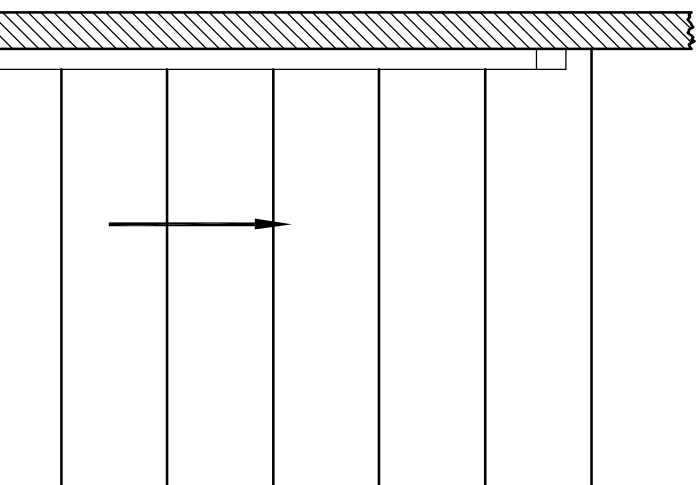
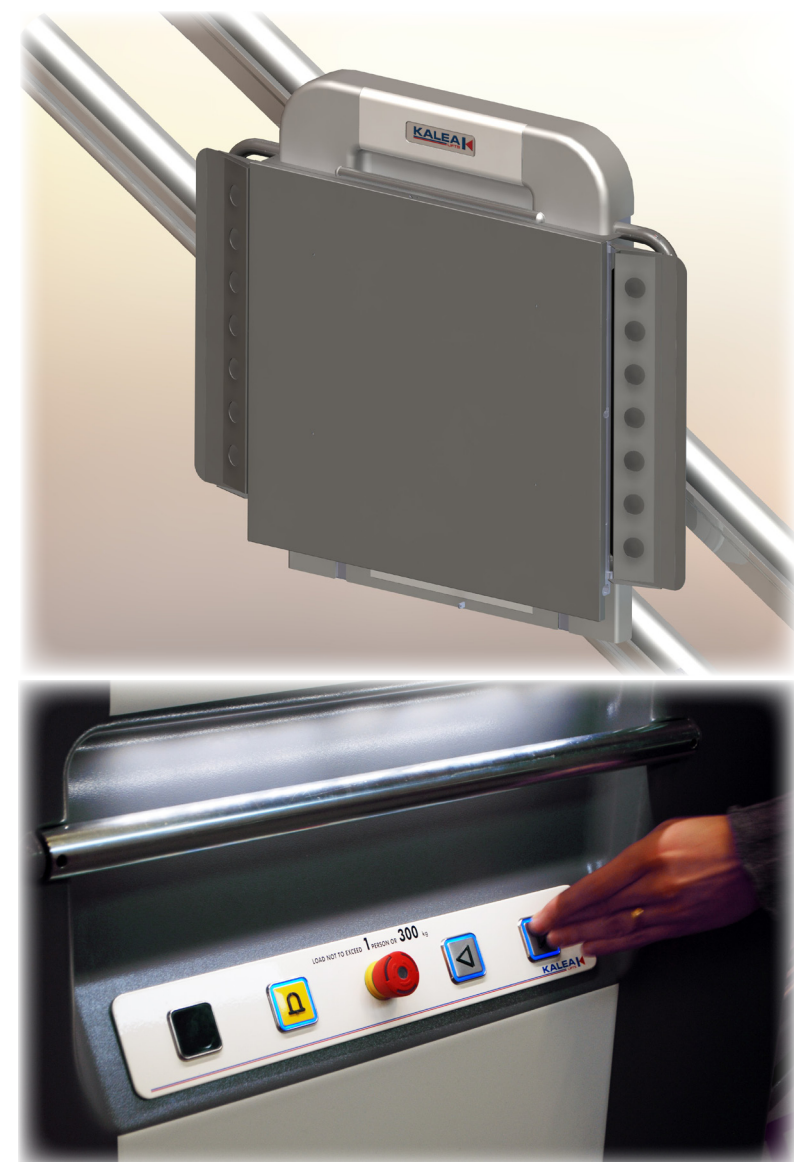
The Roll On Compact is a strong and reliable lift, equipped with a micro computer based system for security controls and a smart service reminder function. High strength steel components, combined with a brand new electrical system and motor, allow the lift to operate smoothly with a load of up to 300 kg, even in stairs as steep as 45°.

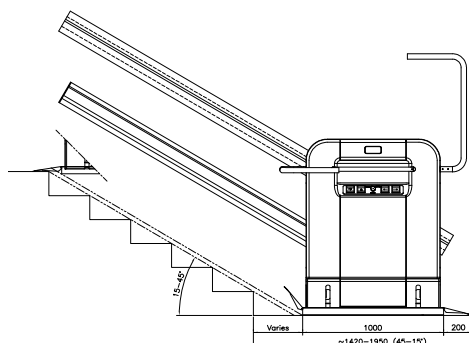
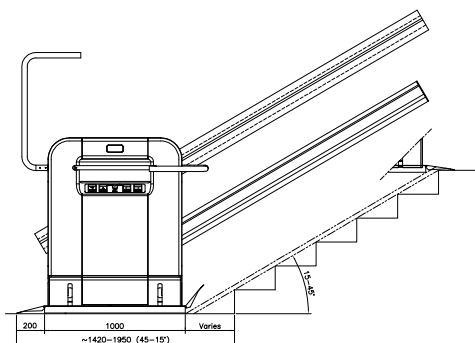
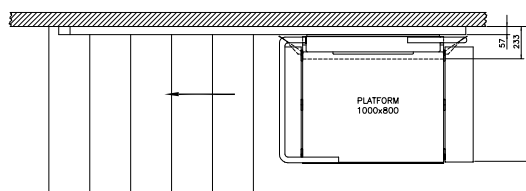
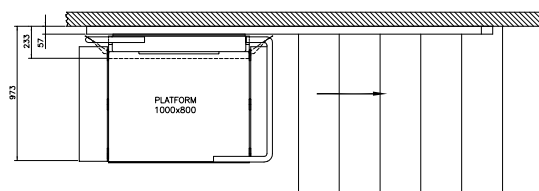
EASY & COMFORTABLE TO USE

The commands of the Roll On Compact are easy to understand and operate. All platform controls are visual and tactile. The lift has automatic safety barriers and a sturdy hand-rail for increased comfort and safety.

FAST TRACK DELIVERY & INSTALLATION

The Roll On Compact has been conceived to achieve fast delivery and easy installation. The standardised platform and rails can be kept on stock to be adapted directly on site. The Roll On Compact is so easy to install that we will have it up and running for you in less than a day.





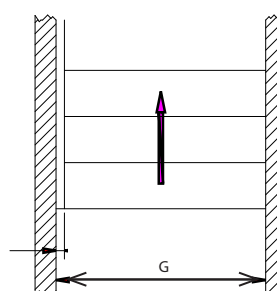
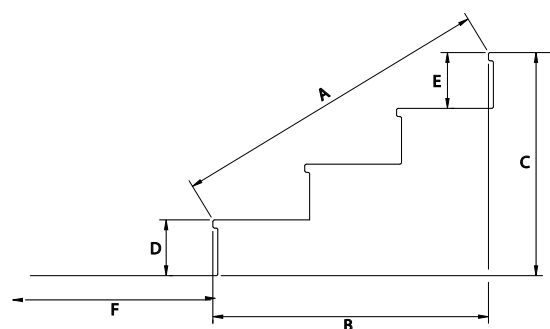
TECHNICAL INFORMATION

Standard configuration:

- Platform: 800x1000 mm (W x L)
- Parked platform: 237 mm thick (including rails)
- Drive system: Rack and pinion
- Motor: Wormgear motor with brake
- Load: 300 kg
- Speed: Max 0,15 m/s
- Stops: 2
- Power supply: 1-phase 230 V 50 Hz 10 A
- Operation voltage: 24 V
- Platform controls: Visual and tactile press-and-hold buttons
- Landing controls: Press-and-hold buttons with key switches
- Gradient of staircase: 15-45°
- Security: Overload warning, emergency lowering, service reminder

OPTIONS

- Outdoor installation
- Side access (800x1000 platform only)
- 800x1250 platform
- Electrical emergency lowering
- Posts
- Wireless remote control
- RAL colours



A	Nose to nose	mm
B	Total depth of risers	mm
C	Total height of risers	mm
D	Height of first riser	mm
E	Height of top riser	mm
F	Free space in front of staircase	mm
G	Width of staircase	mm

For more information, please visit www.kalealifts.com or contact Kalea Lifts.

KALEA LIFTS AB

Office:

Address: A Odhners Gata 17, 421 30 V Frölunda, Sweden
 Telephone: +46 31 49 04 40
 Web page: www.kalealifts.com

Kalea Lifts reserve the right to alter the dimensions or specification of any equipment illustrated or described in this brochure without prior notice.